

# WAVERLEY BOROUGH COUNCIL CORE STRATEGY: POPULATION TOPIC PAPER – January 2013

## Introduction

This Topic Paper provides some statistical information on population and demographic changes in Waverley. The purpose is to provide some contextual information for the Waverley Borough Core Strategy. The Principal sources of information are:-

- The population and household projections produced by the Office for National Statistics (ONS);
- Some specific population/household projections produced for the Council by Cambridge Econometrics using the Chelmer Population and Housing Model; and
- Latest release Information from the 2011 Census

The Paper outlines the current Borough population profile, household structure and employment population and examines how they are projected to change between now and 2036. It also looks at the projected change in household numbers for the Borough in more detail.

With regard to natural population change, in all scenarios run using the Chelmer Model, the future trends in age and gender-specific fertility and mortality rates are taken from the most recent national population projections published by ONS (2010-based). These rates are calibrated to local circumstances as taken from births and deaths reported in the mid-year population estimates.

For non-household population, assumptions are taken from the 2008 sub-national population projections published by the Office of National Statistics (ONS).

## Current Population

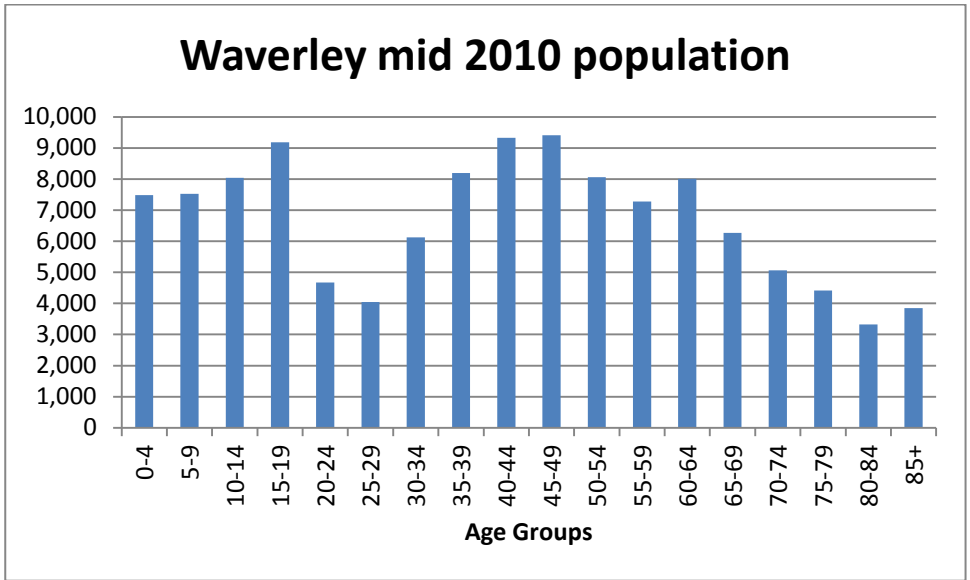
The current population for Waverley is estimated to be **121,600**<sup>1</sup>, which is an increase on the 2010 estimate of 120,252 of 1,348. Since the 2001 Census the Waverley population has risen by some **5,800** people from 115,800. In the same period (i.e. April 2001 to March 2011) some **2,451** new homes were completed in Waverley.

The 2010 ONS estimates indicate that children aged 0-14 represent 20% of the total population, which is higher than the England average of 17.5%. The proportion of people over 65 in Waverley is 19% of the total population, which is higher than the national average of 16.4%.

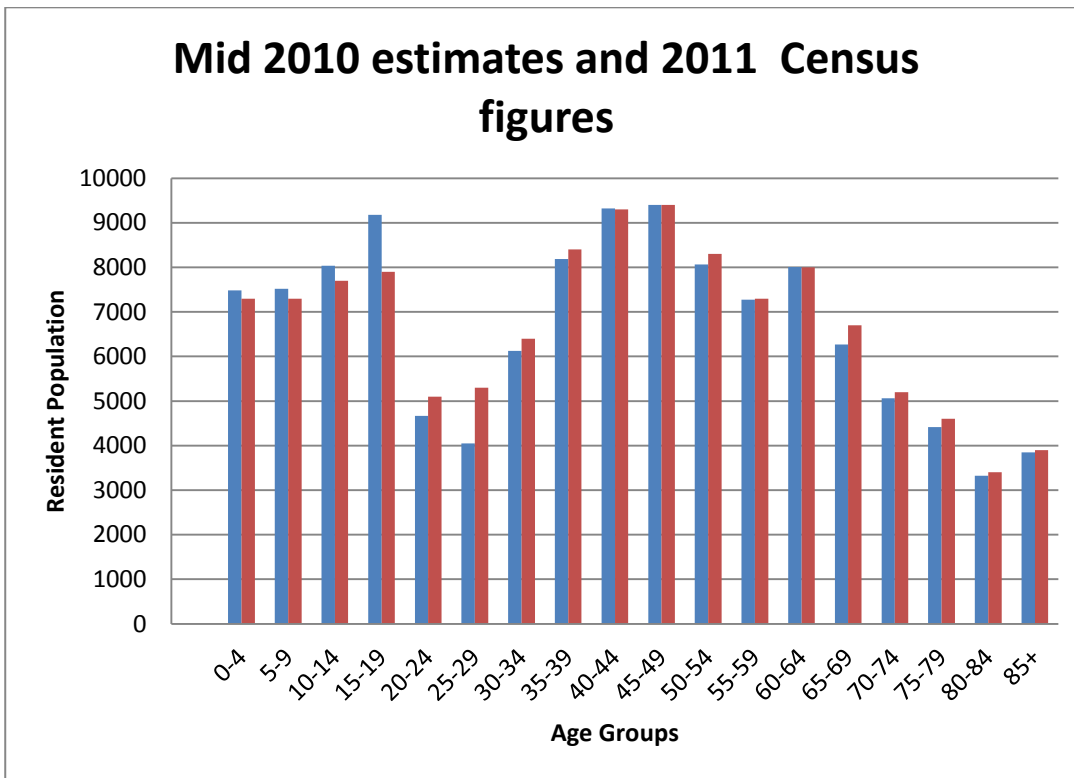
The following graph shows the age breakdown of the Waverley population taken from the 2010 mid year estimates.

---

<sup>1</sup> Table PO4: 2011 Census: Usual resident population by five-year age group, local authorities in England and Wales



The following graph overlays the population profile taken from the 2011 census data over the profile from the Mid-2010 ONS estimates. Although these two profiles are broadly similar, the most noticeable differences are in the age groups 15-19 and 25-29.



There is a significant drop in the 20-24 age group, which is likely to be due to the high education levels in the Borough and people moving away to university.

### Population Projections

The population projections used in the South East Plan were originally based on the ONS 2004-based (revised) household and population projections. In 2004, the population in Waverley was estimated to be **116,300**. The revised 2004-based projections estimated that

this would increase to **117,300** in 2011, to **119,000** in 2016 and to **123,700** in 2026. This represented an increase in population of some **6.4%** between 2004 and 2026.

In 2012 the Council commissioned Cambridge Econometrics to produce some population and household projections using the Chelmer Population and Housing Model. The first or 'Baseline' Scenario draws on the ONS 2008-based Sub National Population Projections (SNPP). Migration flows are based on recent historical data, and assume that the average levels of internal migration between 2005 and 2010 will continue.

According to this 'Baseline' Scenario, the resident population in the Borough in 2006 was estimated to be **116,800**. This is projected to increase to **130,900** by 2026, an increase of **14,100** or **12%** over the whole period, as shown in Table 1<sup>2</sup> below.

Table 1: Baseline Scenario	2006	2011	2016	2021	2026	2031
Total population	116800	119600	122600	126900	130900	134900

A second scenario was run, that looked at the effect on population change when using longer term migration trends in Waverley. In this scenario, assumptions for the future levels of the different migration flows (in/out, domestic/ international) migration are based on longer term historical data. The assumption for both internal and international migration is that the average levels (by age and gender) seen over the last ten years (2000-10) will continue into the future. These assumptions are applied after 2010. Using this scenario, the population of Waverley is projected to increase from **116,800** in 2006 to **129,124** in 2026, an increase of **12,324** or **10.6%**, as shown in Table 2<sup>3</sup> below.

Table 2: Long Term Migration Scenario	2006	2011	2016	2021	2026	2031
Total population	116800	120761	123623	126579	129124	131897

A third scenario was run that assumed that there would be zero net migration. In this scenario, shown in Table 3,<sup>4</sup> future total (ie internal and international) net migration after 2012 is assumed to be zero. The starting assumptions for future levels of the different migration flows (in/out, domestic/international) migration are as in the Baseline Scenario. These are then adjusted by the model so that net total migration in each specified period is zero. Using this scenario, the population of Waverley is projected to increase from **116,800** in 2006 to **120,675** in 2026, an increase of **3,875** or **3.3%**.

Table 3: Zero Net Migration Scenario	2006	2011	2016	2021	2026	2031
Total population	116800	119600	120567	121014	120675	120457

It is clear from the above that the most significant driver for population change in Waverley is migration. In particular, this is migration into Waverley from the rest of England. Table 4

<sup>2</sup> Source: Chelmer Model: Baseline Scenario – Targetted to 2008-based Sub-National Population Projections for Waverley 2012.

<sup>3</sup> Source: Chelmer scenarios for Waverley: Cambridge econometrics: Long term (10 years) average migration over 2000-10 carried forward. 2012

<sup>4</sup> Source: Chelmer scenarios for Waverley: Cambridge econometrics: Zero net migration from 2012.

below shows the average annual population change drivers in Waverley in the period 2001 to 2010.<sup>5</sup>

Births	1287
Deaths	1155
Flow in from rest of England	8247
Flow out to rest of England	7846
International migration in	884
International migration out	925

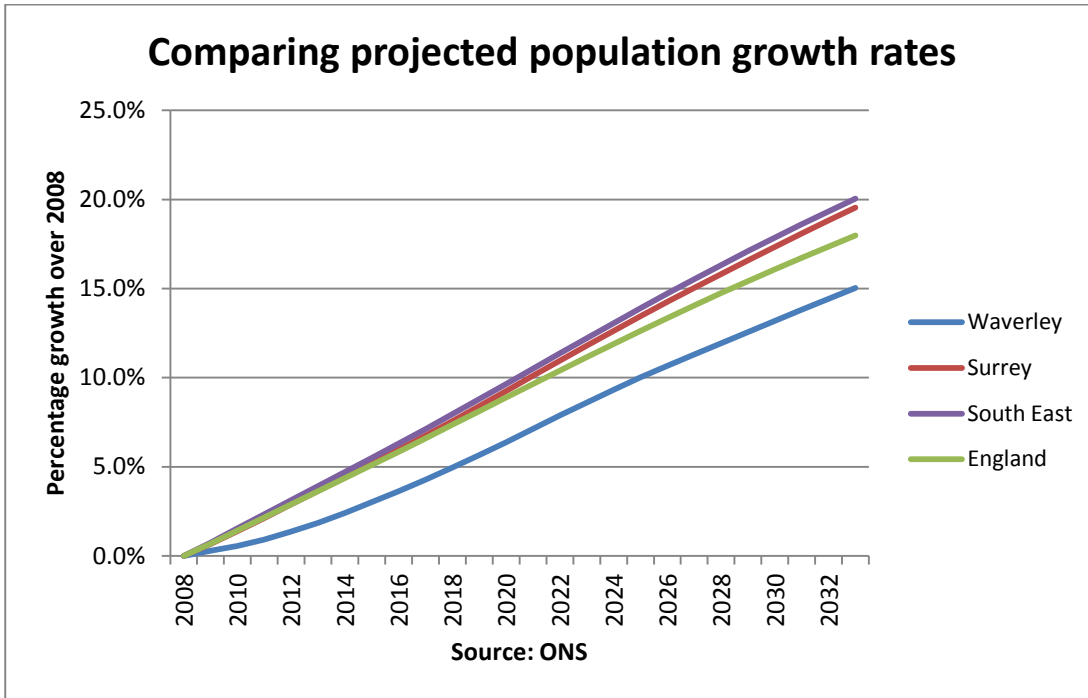
It is important to understand the factors that are driving population change and the assumptions underlying these, as it does not follow that these trends will continue, particularly when making projections about possible population change over a 15 to 20 year period into the future. An examination of past migration patterns over an extended period demonstrates that there has not been a consistent pattern. Table 5 below identifies natural change and net migration (and other changes) for each year from 1991 to 2009.<sup>6</sup>

Year	Natural change	Net migration
1991	90	-817
1992	10	-71
1993	10	-246
1994	-22	631
1995	-28	-1044
1996	68	1016
1997	55	148
1998	0	542
1999	-52	-8
2000	56	181
2001	14	140
2002	-32	375
2003	104	49
2004	66	-1
2005	66	334
2006	282	593
2007	271	575
2008	191	582
2009	226	749

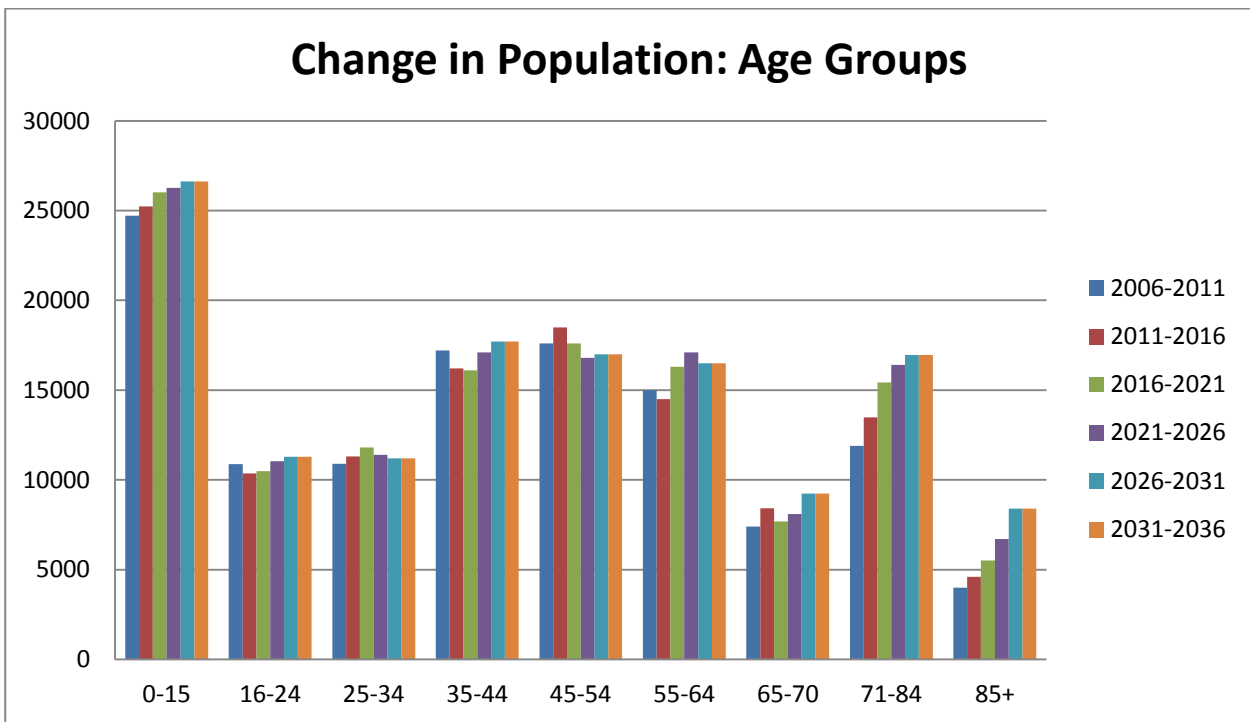
The percentage growth in population in Waverley is projected to be lower in Waverley than in Surrey, the South East and England as a whole, as shown in the following graph:

<sup>5</sup>Source: ONS Components of Change for England and Wales – annual tables for 1991-2 to 2009-10

<sup>6</sup> Source: ONS Components of Change for England and Wales – annual tables for 1991-2 to 2009-10



The following graph shows the estimated population structure in Waverley by age groups to 2036.<sup>7</sup> This is taken from the Chelmer Model 'Baseline' Scenario based on the 2008 ONS projections.



### Household Projections

As stated above, the South East Plan largely drew on the 2004-based (revised) household and population projections. In terms of the number of households, the 2004-based projections suggested that the number of households in Waverley was set to increase from

<sup>7</sup> Source: Chelmer scenarios for Waverley: Cambridge econometrics: Targetted to 2008-based Sub-National Population Projections for Waverley 2012

approximately **48,000** in 2006 to approximately **55,000** in 2026, an increase of approximately **7,000**. The 2006-based national household projections were released in March 2009. These projected a higher growth in households compared with 2004-based (revised) projections, equating to an extra 35,000 households per year between 2006 and 2026 in England.

The projections that the Council commissioned from Cambridge Econometrics also provide information on the number of households in Waverley. Table 6 below shows the projected change in the number of households in Waverley using the three scenarios outlined earlier. The 'Baseline' Scenario predicts an increase from **47,341** households in 2006 to **55,273** households in 2026, an increase of **7,932**. Over the same period the Long Term Migration Scenario projects an increase from **47,341** to **53,354** households (an increase of **6,013**); and the Zero Net Migration scenario indicates an increase from **47,341** to **51,539** households, (an increase of **4,198**).

<b>Table 6: Household Projections using the Chelmer Population and Housing Model</b>	<b>2006</b>	<b>2011</b>	<b>2016</b>	<b>2021</b>	<b>2026</b>
Total households: Baseline Scenario	47341	48854	50859	53278	55273
Total households: Long Term Migration Scenario	47341	48758	50145	51842	53354
Total households: Zero Net Migration Scenario	47341	48584	49813	50723	51539

These scenarios show the impact that trends in migration affect projections for household change in Waverley, with lower levels of household growth derived from the Long Term Migration Scenario and the Zero Net Migration Scenario. They also show how the projected increase in households in Waverley between 2006 and 2026 derived from 2008 ONS data (i.e. the Chelmer Model Baseline Scenario) compares with the 2004-based ONS projections (ie. 7,932 compared with approximately 7,000).<sup>8</sup>

<sup>8</sup> Source: ONS Table F: 2004-based Sub Regional Household Projections